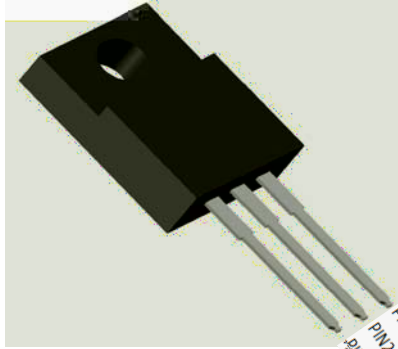


Schottky Diodes



Features

- High frequency operation
- Low forward voltage drop
- High purity, high temperature epoxy encapsulation for enhanced mechanical strength and moisture resistance
- Guard ring for enhanced ruggedness and long term reliability
- Solder dip 275 °C max. 7 s, per JESD 22-B106

Typical Applications

Typical applications are in switching power supplies, converters, freewheeling diodes, and reverse battery protection.

Mechanical Data

P i Tin plated leads, solderable per S i s
J-STD-002 and JESD22-B102

Polarity: As marked

Maximum Ratings (T_a=25 Unless otherwise specified)

PARAMETER	SYMBOL	UNIT	MBR10100FCTS	MBR10150FCTS	MBR10200FCTS
Device marking code			MBR10100FCTS	MBR10150FCTS	MBR10200FCTS
Repetitive Peak Reverse Voltage	V _{RRM}	V	100	150	200
Average Rectified Output Current @60Hz sine wave, R-load, T _c =140 U	I _{AV}	A			
Current Squared Time @1ms t 8.3ms T _j =25	I ² t	A ² s		41	
Storage Temperature	T _{stg}			-55 ~ +175	
Junction Temperature	T _j			-55 ~ +175	

Electrical Characteristics T_a=25 Unless otherwise specified

PARAMETER	SYMBOL	UNIT	TEST CONDITIONS	MBR10100FCTS	MBR10150FCTS	MBR10200FCTS
Maximum instantaneous forward voltage drop per diode	V _{FM}	V	I _{FM} =5.0A	0.85	0.9	0.95
Maximum DC reverse current at rated DC blocking voltage per diode	I _{RRM1}	mA	V _{RM} =V _{RRM} T _a =25	0.1		
	I _{RRM2}		V _{RM} =V _{RRM} T _a =125	20		

Note1:Pulse test:300uS pulse width,1% duty cycle

Note2:Pulse test:pulse width 40mS



MBR10100FCTS THRU MBR10200FCTS

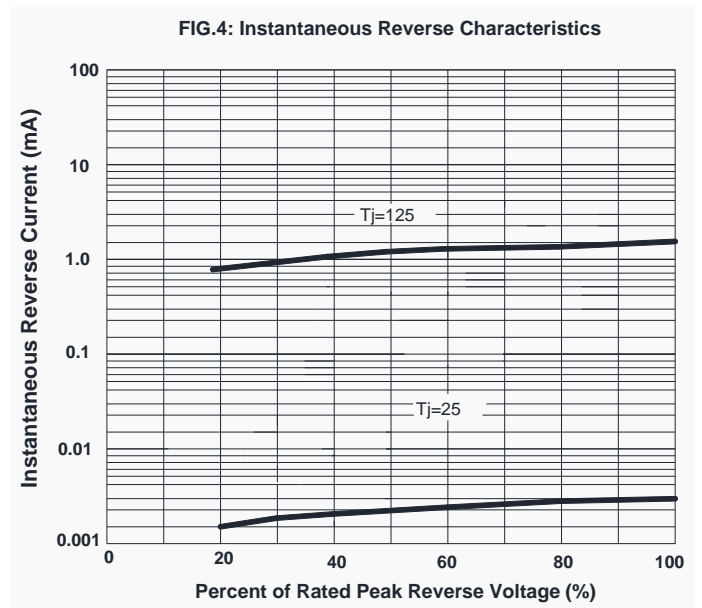
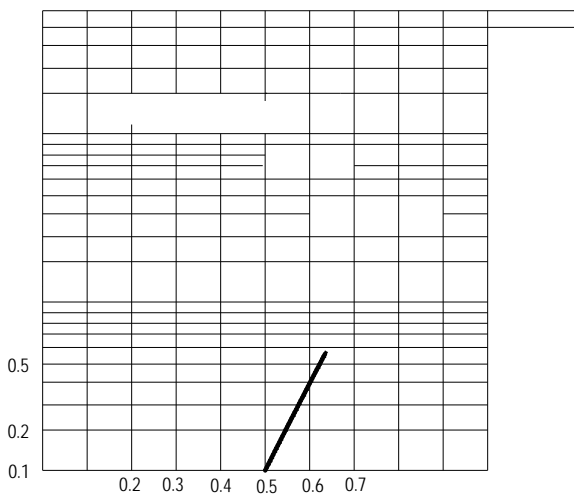
Thermal Characteristics $T_a=25$ Unless otherwise specified

PARAMETER		SYMBOL	UNIT	MBR10100FCTS	MBR10150FCTS	MBR10200FCTS
Thermal Resistance	Between junction and case	R_{J-C}	/W	4.0		

Ordering Information (Example)

PREFERED P/N	UNIT WEIGHT(g)	MINIMUM PACKAGE(pcs)	INNER BOX QUANTITY(pcs)	OUTER CARTON QUANTITY(pcs)	DELIVERY MODE
MBR10100FCTS THRU MBR10200FCTS	Approximate 1.9	50	1000	5000	Tube

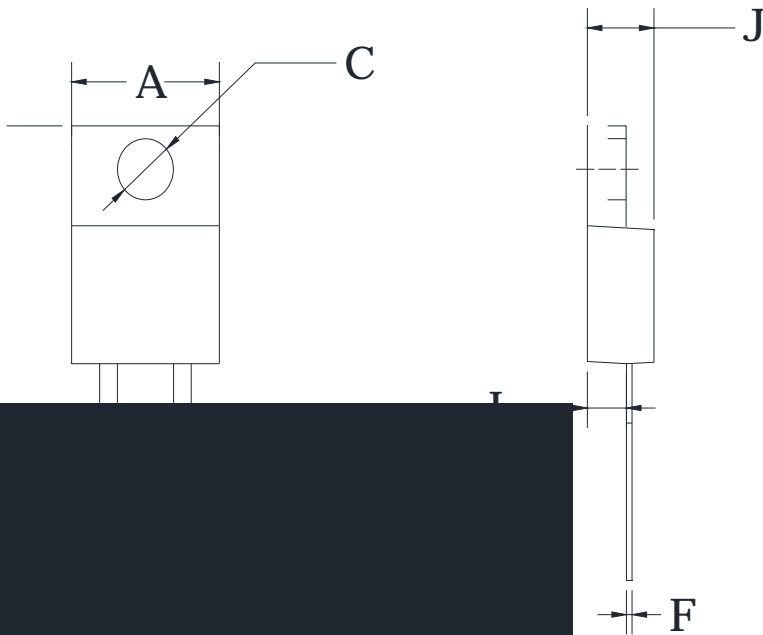
Characteristics (Typical)





MBR10100FCTS THRU MBR10200FCTS

Outline Dimensions



ITO-220AB		
Dim	Min	Max
A	9.8	10.2
B	2.25	2.75
C	2.95	3.45
D	14.75	15.25
E	3.05	3.95
F	0.45	0.75
G	0.45	0.75
H	13.4	14.2
I	2.35	2.75
J	4.3	4.8
K	2.58	2.82
L	2.58	2.82
M	1.47	1.77

Disclaimer

only. Yangzhou Yangjie Electronic Technology Co., Ltd. reserves the right to change the specifications of the products displayed herein to improve reliability, function or design without notice.

This product is not intended for use in any electronic equipment or devices, and not designed to be used with applications where the malfunction of with would directly endanger human life (such as medical equipment, aviation machinery, nuclear-reactor controllers, fuel controllers and other safety critical applications). Yangzhou Yangjie Electronic Technology Co., Ltd. is not responsible for any damages resulting from such improper use.

For more information, please visit our website www.21yangjie.com or contact our sales office for further assistance.